



ELEVATION A



ELEVATION B



THE SYDNEY

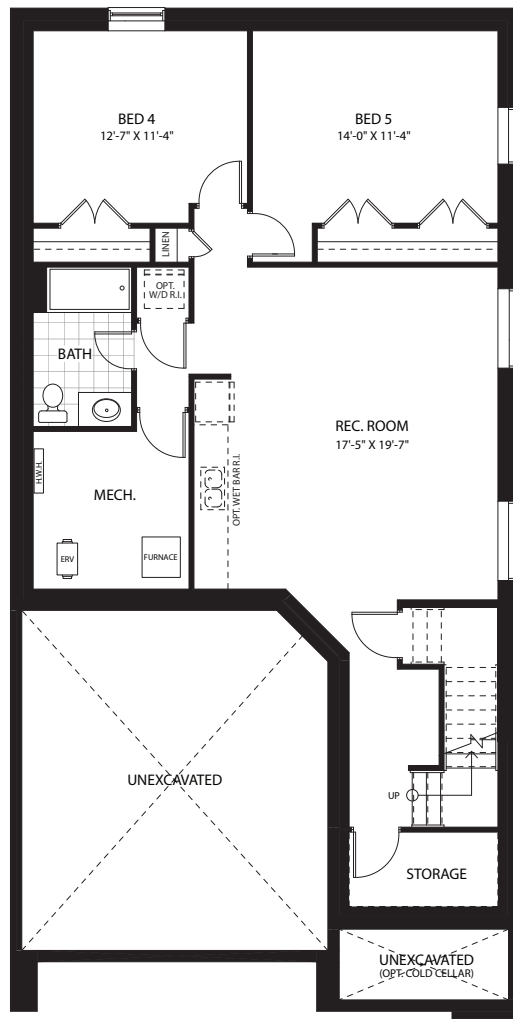
ELEVATION C
3528 SQ.FT. WITH FINISHED BASEMENT

2450
SQUARE FEET

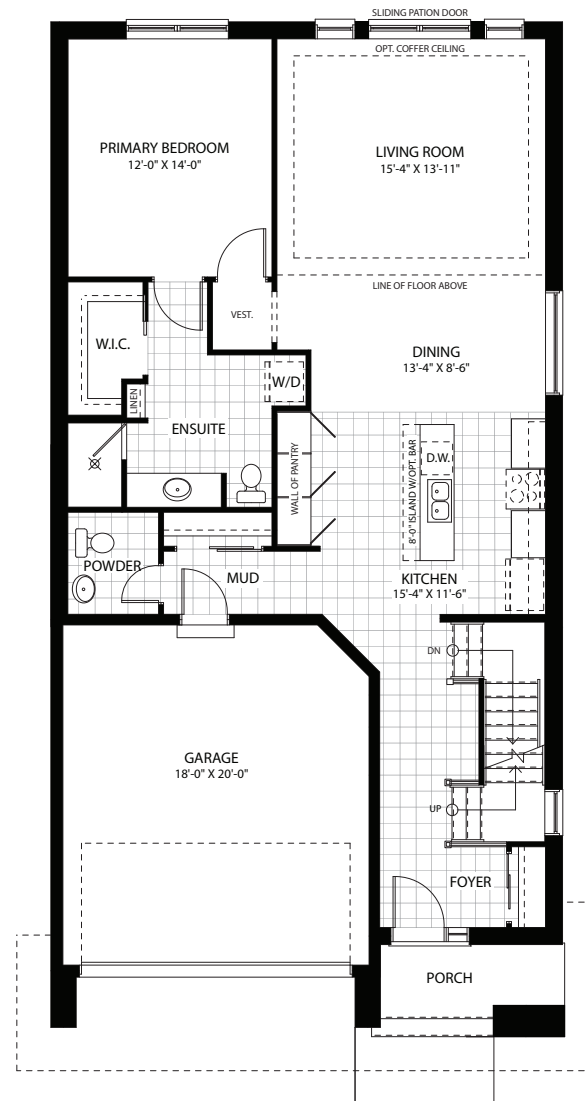
THE SYDNEY

ELEVATION C - 2450 SQUARE FEET
3528 SQ.FT. WITH FINISHED BASEMENT

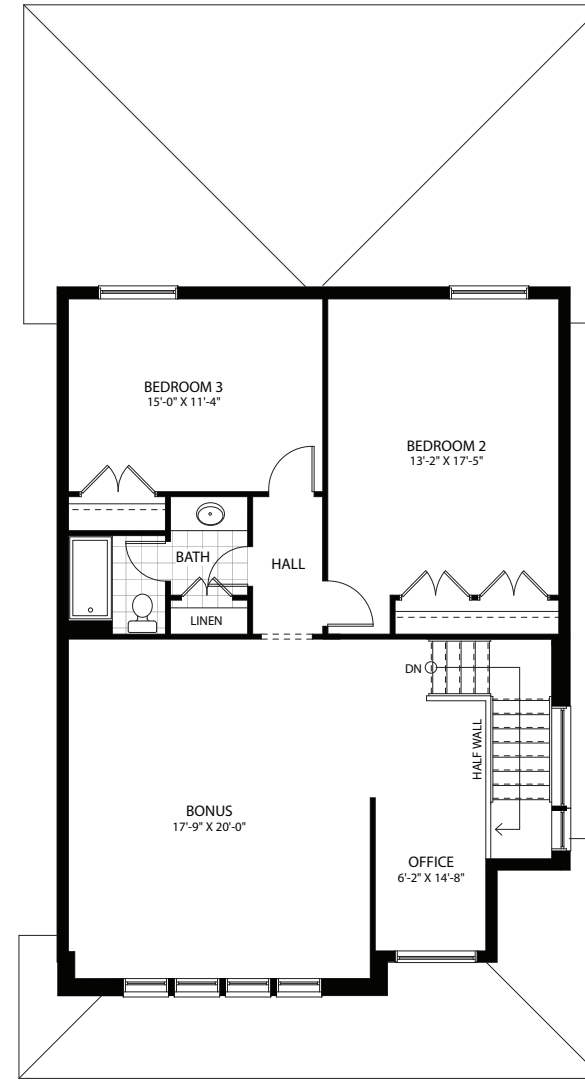
3/4
2.5 STANDARD
 5/6
3.5 WITH BASEMENT



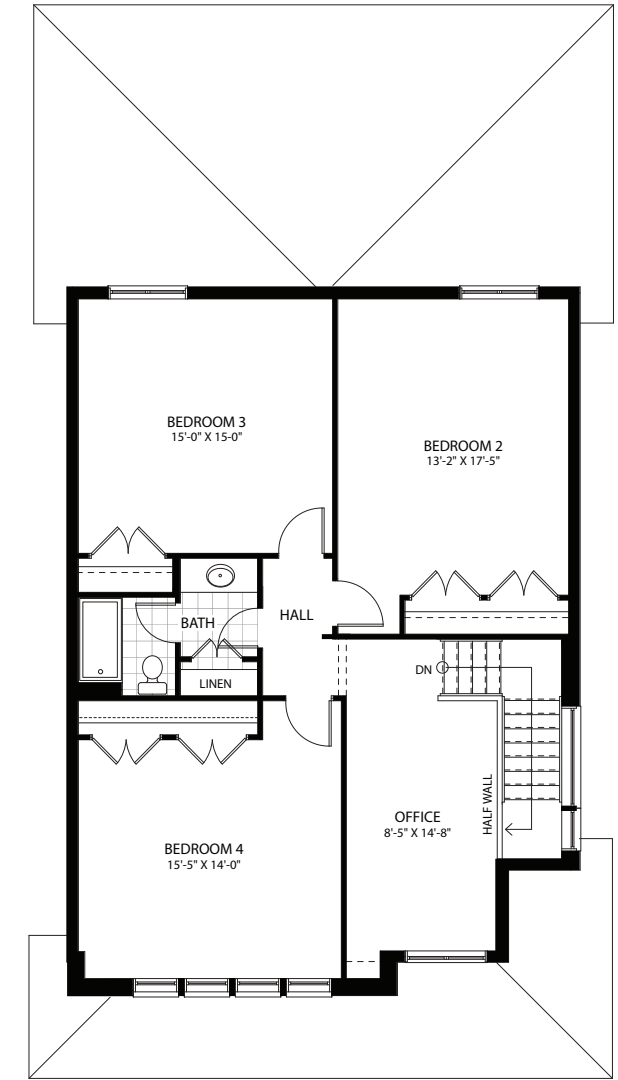
BASEMENT
1078 SQ.FT.



MAIN FLOOR
1261 SQ.FT.



SECOND FLOOR
1189 SQ.FT.



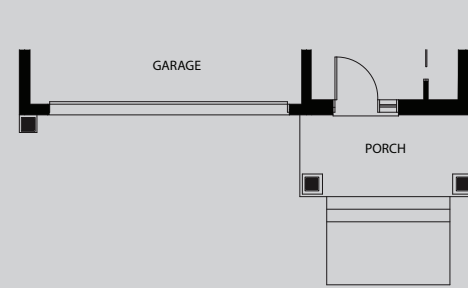
SECOND FLOOR (OPT. 4 BEDROOM)
1189 SQ.FT.

NOTE: Unfinished Basement Standard is 4 basement windows and a 3-piece rough-in

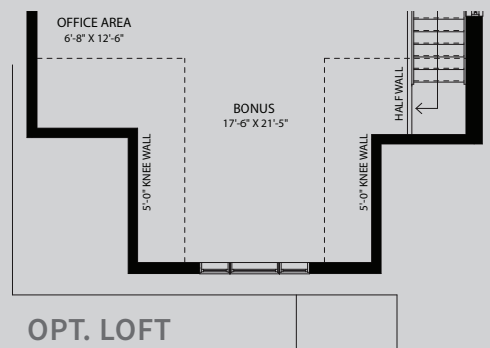
ELEVATION A

1262 SQUARE FEET
 2394 SQ.FT. W OPT. LOFT
 2340 SQ.FT. W FINISHED BASEMENT
 3472 SQ.FT.
 W FINISHED BASEMENT & OPT. LOFT

1
1.5 WITH NO BASEMENT OR OPT. LOFT
3/4
2.5 WITH FINISHED BASEMENT OR OPT. LOFT
5/6
3.5 IF ENTIRE HOUSE IS FINISHED



MAIN FLOOR
1262 SQ.FT.

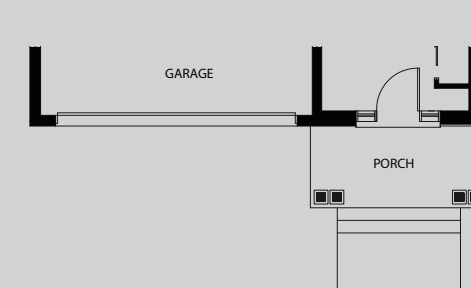


OPT. LOFT
1132 SQ.FT.

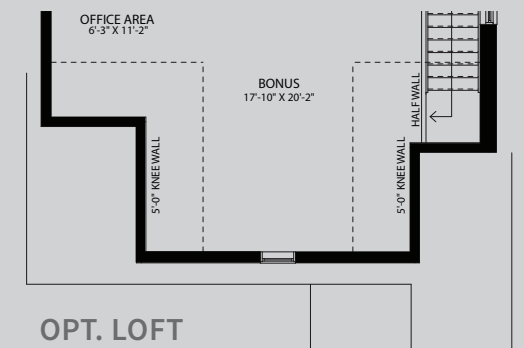
ELEVATION B

1262 SQUARE FEET
 2404 SQ.FT. W OPT. LOFT
 2340 SQ.FT. W FINISHED BASEMENT
 3482 SQ.FT.
 W FINISHED BASEMENT & OPT. LOFT

1
1.5 WITH NO BASEMENT OR OPT. LOFT
3/4
2.5 WITH FINISHED BASEMENT OR OPT. LOFT
5/6
3.5 IF ENTIRE HOUSE IS FINISHED



MAIN FLOOR
1262 SQ.FT.



OPT. LOFT
1142 SQ.FT.